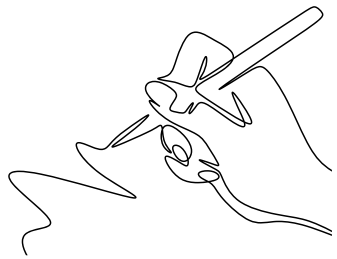


OCTOBER AND
NOVEMBER 2025

Extension briefs



By Hannes Bester, MC Pretorius, Wayne Mommsen, Coenraad Fraenkel, André Combrink, Natasha Jackson, Jan Landman, and Rudolph Strydom (Citrus Research International)

Integrated pest management (A. Manrakhan and S.D. Moore)

Thrips management During October and November citrus fruit is highly susceptible to damage from citrus thrips. Therefore, orchards should be scouted at least once a week for this pest, being sure to look under the sepals. Citrus thrips larvae cause more serious damage than adult thrips. Therefore, low numbers of adults in the absence of larvae may not require immediate intervention. The intervention threshold for citrus thrips larvae on fruit is 2% for the first four weeks after petal fall, 3% for five to six weeks after petal fall, then 4% for seven to eight weeks after petal fall. These thresholds can be roughly doubled if the population comprises mostly adults. However, to make effective use of these thresholds, scouting especially under the calyx of fruit, must be accurate and reliable. Citrus thrips are genetically predisposed to developing resistance to pesticides, so avoid spraying two consecutive sprays of the same active ingredient. Treatments should be applied when intervention thresholds are exceeded. Treatments that give six to eight weeks' thrips control will eliminate natural enemies of false codling moth (FCM), mealybug, and scale insects for at least a month. With this degree of required control, it is best to spray these at petal fall and to follow up with softer options when necessary.

Parasitoid releases Growers planning to augment parasitoids for mealybug, (i.e., *Coccidoxenoides perminutus* or *Anagyrus vladimiri*), red scale (i.e., *Aphytis*

melinus) or FCM (i.e., *Trichogrammatoidea cryptophlebiae*) control, should initiate releases as early in the new season as possible. Augmentative releases of parasitoids are not a corrective option. Therefore, growers should not wait until the pest reaches a problematic level. Research trials with mealybug and FCM parasitoids indicate that better suppression of the pest is achieved with releases initiated as early as October, or at the latest, November. However, first ensure that sufficient time has lapsed since application of pesticides that would be detrimental to parasitoids. This information is available from CRI and the biocontrol agent producers/suppliers. Lastly, if releasing parasitoids against mealybug, you need to be sure that the mealybug species is indeed susceptible to the parasitoid being released. For *C. perminutus*, it's only citrus mealybug, whereas for *A. vladimiri*, it's citrus and oleander mealybug.

Mealybug management Pre-harvest blemish analyses or winter inspections of trees might have indicated that preventative spraying for mealybug is unnecessary. This can be confirmed or refuted by inspecting fruit in October and November for the presence of mealybug. Sprays applied before calyx closure will be more effective than those applied thereafter. An infestation level that exceeds approximately 5% at petal fall, or up to 20%, six weeks after petal fall, requires immediate chemical intervention. At this later stage, the organophosphates and buprofezin can no longer be used. However, trial work indicates that some of the newer options, particularly spirotetramat and sulfoxaflor, are at least as effective.

Anything short of a thorough, full-cover film spray will compromise the effectiveness of a chemical treatment. Furthermore, early season treatment is far more effective than corrective treatment (after November). So, if at all in doubt, treat preventatively for mealybug. If augmentative parasitoid

releases are planned, familiarise yourself with the recommendations in the section on parasitoid releases. Ants must be prevented from entering trees so that they do not disrupt natural enemies. During scouting, inspect the trunks of data trees for ant activity. If more than 30% of trees exhibit activity, apply registered treatments. Ensure that trees are adequately skirted, to prevent branches from touching the ground.

Bollworm In many regions, it might already have been necessary to treat bollworm during September. However, routine spraying for bollworm is generally not necessary. Monitoring the percentage of blossom clusters infested, enables determining if a spray is necessary. A treatment should be applied when more than 20% of blossom clusters are infested with larvae or mature eggs. Enlarged navel end problems in Navel oranges can be further exacerbated by bollworm attack. In which case, a threshold of 11% of clusters infested should be used. Four biocontrol options are available for the control of bollworm. These are DiPel (Bt), Helicovir, Bolldex and Graboll (all viruses). To be effective, these biological products should be applied immediately after egg hatching, but certainly not once larvae are longer than one centimetre in length.

Citrus flower moth The citrus flower moth (or lemon borer moth), *Prays citri*, are attracted to lemon blossoms and occasionally blossoms of other citrus types. Growers should inspect these blossoms in spring to determine if they are infested with larvae or pupae. These can be identified by their colouration, which is usually greenish, and the association of webbing with pupation. If blossom infestation by the pest is detected during scouting, control measures are justified to prevent the development of a second generation, which can attack lemon fruitlets resulting in severe damage. Infestation of 5% of blossoms with this first generation will lead

to approximately 5% fruit damage. Except for *Bt* (e.g., Delfin), there are no other plant-protection products registered for use against the lemon borer moth. Effective plant-protection products that are registered for other pests on citrus include mevinphos and spinetoram (Delegate).

FCM Importantly, as was the case since 2018, all growers intending to export citrus to the EU must implement the FCM Systems Approach (now abbreviated as the FCMSA). FCM must be controlled from early in the season, otherwise the population could escalate to undesirable levels, which will be far more difficult to control. As soon after harvesting as possible, all out-of-season fruit must be removed from trees and destroyed. Within the FCMSA, it is mandatory that this be completed within 14 days after completion of harvesting the orchard. If not done, this fruit can act as a reservoir for FCM and fruit flies, enabling particularly the former, to carry over onto the new cropset in spring. Begin orchard sanitation as early in the season as possible, even before it is mandatory within the FCMSA. Infested fruitlets can contribute significantly to the build-up of FCM populations later. So, any extra required labour is well worthwhile.

FCM pheromone traps should be hung no later than November. It is imperative that these traps be hung strictly according to the recommendations on the label.

Growers wishing to control FCM with Cryptomax, Cryptogran, Cryptex or Gratham (FCM granulovirus) should apply the first treatment no later than the end of November or early in December – applied shortly after the flight peak, which occurs at this time in all production areas. Cryptomax is a relatively new FCM granulovirus formulation, consisting of two distinct virus isolates, thus increasing the probability of good efficacy against multiple FCM populations, and decreasing the possibility of resistance development, even though such a possibility is negligible.



Hannes Bester



MC Pretorius



Coenraad Fraenkel

Note these important principles, if using mating disruption (e.g., Isomate, Checkmate, Splat, X-Mate):

- Application must be initiated early in the season – preferably October, but not later than November – before FCM levels begin to rise. However, trial results indicate that initiation as early as July in the warm northern production regions may be more effective in simultaneously protecting

late-hanging Valencias and suppressing the first FCM generation of the new season. But first check with your product supplier that their registration permits such a practice.

- The product must be applied (or hung) as high as possible in the tree.
- Large areas (at least 5 ha, but preferably larger) must be treated. The presence of any untreated areas on the farm will negatively affect the efficacy of mating disruption, as the technology is geared towards population suppression rather than crop protection. It is advisable to apply it on an area-wide basis for optimal efficacy.

Crop and fruit quality management (P.J.R. Cronjé)

Fruitset treatments must be applied according to cultivar requirements. Treatments include the application of gibberellic acid (GA3) and girdling, especially for parthenocarpic cultivars. General guidelines cannot be given, as fruitset treatments differ by cultivar and orchard. Avoid moisture stress during full bloom, fruitset and early fruit growth.

Fruit growth must be optimised with optimal nutrition and irrigation practices during Stage One of fruit development. The rind (flavado and albedo) is formed during this phase of fruit development. Importantly, ensure optimal uptake of essential nutrients such as Ca and Mg, which play an important role in the structural integrity of cell membranes. In addition, fruit thinning practices need to be applied to reduce inter-fruit competition and to optimise fruit growth.

The **acidity** of fruit at harvest is largely determined within the first six weeks of fruit growth and development. Thereafter, only minor modifications to acidity can be achieved. Under conditions of anticipated high acidity mono-ammonium phosphate (MAP) or mono-potassium phosphate (MKP) can be

applied at 1%, i.e., 1 kg per 100 l of water, six weeks after full bloom. Please note that these phosphate sources have not been tested on all citrus cultivars; until now 1% MAP or MKP has reduced acidity on Valencia orange and Temple tangor, but not on grapefruit.

Pruning of late cultivars should be done soonest after harvest. All the following should be removed during pruning: old, broken, and dead shoots/twigs; weak and entangled shoots crossing each other or hanging downwards; as well as any rootstock regrowth. Thin out, cut back or remove regrowth on the inside of the tree. Light levels above 30% are necessary for optimal photosynthesis. Enough windows should be cut to allow adequate light distribution and to improve bearing wood within the tree. This will lead to increased fruit size and internal fruit quality (Brix^o), better fruit colour, increase in rind integrity, as well as a more uniform fruit size distribution. Pruning can be used as a thinning technique: prune more heavily after a light crop if the orchard has a history of alternate bearing. A follow-up prune of regrowth in the summer is of critical importance. Always sanitise pruning tools with 10% Jik.

Grondgedraagde siektes (MC Pretorius en J.M. van Niekerk)

Aalwurms Grond- en wortelmonsters kan nou in die lente getrek word en vir ontleding na die Diagnostiese Sentrum in Nelspruit gestuur word, sodat die status van die aalwurmpopulasie in die wortels bepaal kan word. Die resultaat sal dien as h bestuurshulpmiddel om h koste-doeltreffende aalwurmbeheerstrategie daar te stel. Die gebruik van chemiese aalwurmdoders vir die beheer van die sitrusaalwurm word nie aanbeveel alvorens ten minste 30 mm reën geval het nie (Oktober). Elke aalwurmdodertoediening behoort op nat (veldkapasiteit) grond toegedien te word en met h behoorlike besproeiing opgevolg te word. Dit verseker dat die middels deeglik in die grondprofiel ingewas word. Handhaaf etiketaanbevelings

met alle toedienings. Afwykings van die geregistreerde dosisse, om kostes te bespaar, word sterk afgeraai.

Phytophthora wortelvrot – die gebruik van fosfonaatprodukte wat sistemies is, is h uiters effektiewe en bekostigbare beheermaatreël wat suksesvol deur produsente gebruik word. Om effektiwiteit te verseker en fitotoksisiteit te voorkom, is dit van uiterste belang dat die etiket deeglik bestudeer word asook die waarskuwings voordat die produk gebruik word. Indien kraagvrotletsels voorkom, kan h stamverf of blaarbespuiting aangewend word, drie aanwendings per seisoen met ses tot agt weke intervalle. Vir wortelvrotbeheer word h blaarbespuiting van ten minste twee of verkieslik drie blaarbespuitings met ses tot agt weke intervalle aanbeveel. Fosfonaatbehandelings behoort jaarliks as 'n standaardtoediening op nie-draende bome toegedien te word. Let asseblief daarop dat sekere fosfonaatprodukte as grondtoedienings vir die beheer van kraag en wortelvrot geregistreer is.

Fruit and foliar diseases (P. Moyo)

Alternaria core rot, also known as navel end or black rot, affects navel oranges, lemons and mandarin types, causing dark brown to black rot at the stylar end (navel).

The disease generally occurs on fruit with poorly formed navels. Fruit can develop Alternaria core rot without showing any external symptoms until after harvest. Fruit with large navel-end openings is more susceptible to Alternaria core rot and physiological disorders such as fruit splitting. Also, fruit splitting or microcracks at the stylar end during early fruit development after petal fall, provide entry points for fungal spores that infect young fruit and form infections. The latter remain dormant until favourable environmental conditions stimulate further fungal growth. Application of 2.4-D during full bloom reduces the size of the navel and that of the navel-end opening. Fungicides, including



Wayne Mommsen



André Combrink



Natasha Jackson

difenoconazole and tebuconazole, applied at 50 and 100% petal fall reduce the incidence of Alternaria core rot.

Black spot Citrus fruit is susceptible to citrus black spot (CBS) infection from 80% petal drop. Therefore, it is recommended that CBS fungicide sprays commence from this period and follow through until the end of the susceptibility period (four to five months after petal drop). In cases where fungicide sprays commence later than the date of 80% petal drop, it must be demonstrated that no CBS infection

periods occurred during the period between the date of 80% petal drop and the date of spray commencement, by using either CRIPhytRisk or spore trap data. Fungicides used in the spray programmes must be registered for CBS control and used according to the recommendations specified on the label. The maximum residue level (MRL) restrictions of different fungicide products, for different markets, must be adhered to. Poor control of CBS is largely attributed to poor spray coverage. Therefore, it's very important that spray equipment is properly maintained and calibrated to achieve proper canopy coverage. Cultural practices that reduce the fungal inoculum in the orchards (removal of leaf litter, shredding of pruning debris and removal of sickly trees/orchards if/ where possible) are also important in the management of CBS, as they complement its chemical control. Refer to CRI Cutting Edges 351 and 352 for further information regarding the overall management of CBS and timing of the first CBS sprays.

Postharvest pathology (W. du Plooy and L. Mamba)

By now, most of the crop has been harvested, packed and shipped. Consider these factors regarding vital changes to improve disease management next season:

- **Timespan from harvest to the first fungicide treatment**
 - The shorter this period, the younger any infections will be. Therefore, fungicide treatments will be much more effective, resulting in less rotten fruit in the degreening room and/or the packhouse. Less rotten fruit will reduce the strain on growers' sanitation protocol and pre-sorters.
- **Strength of drench applicator flow**
 - Were you able to apply at least 250 l Ni per bin per minute? A more effective drench application will curb disease development, leading to less rotten fruit arriving at the packhouse, and again, less pressure on the sanitation protocol.

- **An adequate packline facility**
 - You need enough packline facility to sort and remove rotten fruit in the very first part of the packline, at, or just after tip. Most packhouses have insufficient sorting in the beginning of the packline, resulting in packhouse access for rotten fruit, and widespread contamination.
- **Installation of a second sanitation treatment**
 - This should be a total loss system, positioned at the point in the packline after rotten fruit had been removed from the export fruit, to protect the packline from contamination.
- **Sanitation of dip tank/flooder**
 - Do you have a pasteurisation protocol (heating overnight)? Heating the solution to 60°C for one hour and letting it cool down overnight will reduce the build-up of bacteria, as well as Rhizopus and other pathogen spores in the solution. Coliform counts that seem to skyrocket can often be traced back to poor sanitation of reused water.
- **Be proactive at the end of the season**
 - This is the time to thoroughly sanitise the entire packhouse from the roof beams to the floor, but only after all fruit (rotten or fresh) has been removed from the packhouse environment. A quaternary ammonium product can be used, after which surfaces where fruit may contact treated surfaces are rinsed off thoroughly with clean water. Postponing this cleaning until the next season will only add pressure to preparing for the new season, resulting in substandard sanitisation. Time consuming jobs like cleaning dry tunnel rollers must also be done during this time. Cleaned machinery and equipment can be covered with plastic to protect them from dust during the off-season.

• Thorough examination

- An examination of all the equipment should be done right after the season ends, when problems are still fresh in the packhouse manager's mind. This is also the time to do any upgrades, changes, or replacements. Brushes, donuts, and chains are of particular importance to evaluate and replace, if necessary.



Rudolph Strydom

Fertilisation and irrigation (P. Raath)

During this time of the year, after sufficient nitrogen (N) fertilisation, a healthy anthesis has been established and emphasis should be put on fruitset and phase one of fruit growth. Phase one is characterised by intensive cell division in the developing fruitlets and, ultimately, sets the trend for targeted fruit size. After full-bloom, cellular division starts, and the developing ovaries need carbohydrates and N for protein biosynthesis. It's also important to take note of vegetative growth, fruitset and leaf colour as indicators of the effectiveness of the current fertilisation programme and to re-evaluate and adjust if necessary.

Macronutrients During this period the tree has a high demand for N, calcium (Ca) and potassium (K) in relation to phosphorus (P) and magnesium (Mg). Though, the demand of P and Mg is relatively constant. By now P – and if corrective Mg was required – should have been applied, especially on heavier textured micro-irrigated soils. On lighter textured soils, drip irrigated soils, application can be divided into a few instalments throughout the season. Most N should have been applied, with the last instalment due during Oct/Nov. Even fertigated orchards, where N is applied deep into summer on sandy soils, should have received the bulk of its seasonal N (up to 85%) by the end of November.

After fruitset and physiological fruitdrop, take note of final fruitset and re-adjust the fertiliser programme accordingly. A lower set



Jan Landman

than had been predicted, may result in over-fertilisation due to a reduction in fruit acting as carbohydrate and nutrient sinks.

There is a risk of applying excessive N, especially, which can lead to reduced fruit quality and rind colour. During phase one of fruit development Ca plays a central role in cell division, which ultimately affects fruit size and rind integrity. Since Ca is exclusively taken up with the transpiration stream, any factors affecting transpiration (i.e., overcast days, cold conditions, or sudden heat waves that cause stomatal closure) will reduce Ca uptake. On the other hand, excessive transpiration rates (i.e., constant warm weather with low humidity) can result in preferential transport of Ca to the leaves instead of the fruit. Despite sufficient Ca in the soil, insufficient Ca supply during phase one can consequently occur resulting in an increased incidence of creasing and/or fruit splitting. If periods of reduced uptake are suspected/expected, an attempt to increase Ca-uptake can be made by using CaNO_3

as the N source. Apply the CaNO_3 as a soil application and not a foliar application. Due to various antagonisms between Ca and other nutrients, do not apply large, once-off instalments of K or Mg during this stage.

However, most of the season's K should be applied during this period; and 100% of the annual requirement should be applied on heavy soils by end November, while up to 60% of the annual requirement should have been applied on sandy soils. In addition, KNO_3 foliar sprays can be applied from end October through to beginning December if low leaf K levels are expected. This will help improve fruit size.

Micronutrients Their availability is a function of soil pH and should be applied as foliar treatments on alkaline soils. Zinc (Zn), manganese (Mn) and boron (B) can be applied between bud swell and balloon phase, during October when the spring flush is still young with thin cuticles expediting uptake. In soils with optimal pH levels, i.e., 5.0 - 6.5, ZnSO_4 can be applied to the soil to raise the levels to 10 mg/kg. Since there tends to be a poor correlation between soil Zn and Mn concentration and uptake by the tree, foliar applications of Zn and Mn are commonly recommended. If Mn-containing fungicides were used, foliar application should not be necessary. Boron deficiency is common on acid sandy soils where foliar application just before, during flowering, or during October, is advised.

Irrigation During phase one of fruit development any factor that might reduce cell division can have irreversible effects on fruit size. Therefore, care should be taken not to induce any stress through poor irrigation management. During Oct/Nov a 30% depletion of plant available water (PAW) between irrigation cycles is recommended. However, over-irrigation can also be detrimental to root activity and nutrient uptake. Therefore, accurate irrigation scheduling during this period is critical, to ensure optimal fruit size. ▶



Emperor 50 WG



A water dispersible granular translaminar stomach insecticide for the control of pests on Apples & Pears, Canola, Cereal grains (Wheat & Barley), Citrus, Cruciferae (Broccoli, Brussels sprouts, Cabbages, Cauliflower), Grapes (Table & Wine), Peppers, Potatoes, Strawberries, Sugarcane, Tomatoes and Tree nuts (Almonds, Macadamias, Pecans, Cashews, Chestnuts, Hazelnuts, Pistachios, Walnuts)



Emperor 50 WG (emamectin benzoate 50 g/kg) Reg. No. L11613 (Act 36/1947) Danger. Harmful if swallowed, Causes mild skin irritation, Cause serious eye damage, May cause damage to organs, May cause damage to organs through prolonged or repeated exposure, Very toxic to aquatic life with long lasting effects.

ICA International Chemicals (Pty) Ltd. Reg No: 2001/013319/07
Tel: +27-21-886-9812

28 Planken Street, Plankenbrug Industrial, Stellenbosch, 7600, South Africa



ICA International Chemicals



www.icaonline.co.za

