

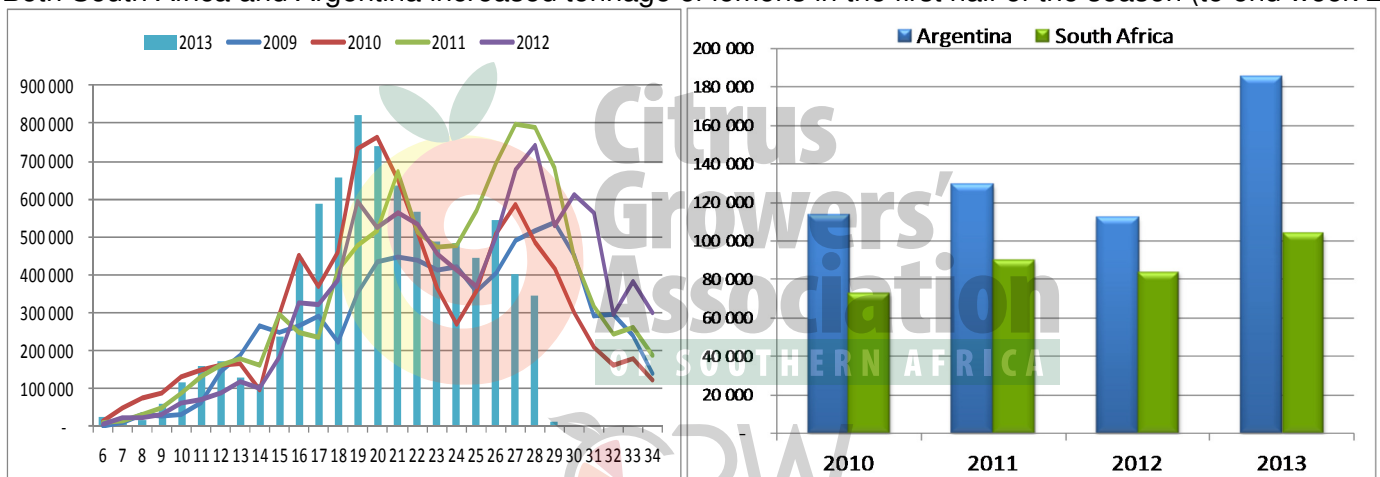
NAVELS:

The revised estimate (17 July 2013) for Navel oranges shows a 1.7 million carton decrease from the original estimate and a 1.4 million cartons decrease on 2012.

Final Packed	Initial Estimate				Projection 3: 17 July			
	Navel	Late Navel ('≥ wk 28)	Cara cara	Total Navels	Navel	Late Navel (>=wk 28)	Cara cara	Total 2013
2012	17 337 931	6 754 093	765 366	24 857 390	16 369 945	5 994 351	755 277	23 119 573

LEMONS:

It seems the predicted poor South African second crop is materializing. (data in 15 kg equivalents)
Both South Africa and Argentina increased tonnage of lemons in the first half of the season (to end week 27).



SOFT CITRUS:

Distribution of volumes (tons) of South African soft citrus is similar to previous years. Argentina has sent more to Russia and less soft citrus to Europe and UK. Chile and South Africa have sent less to the USA than last year.

